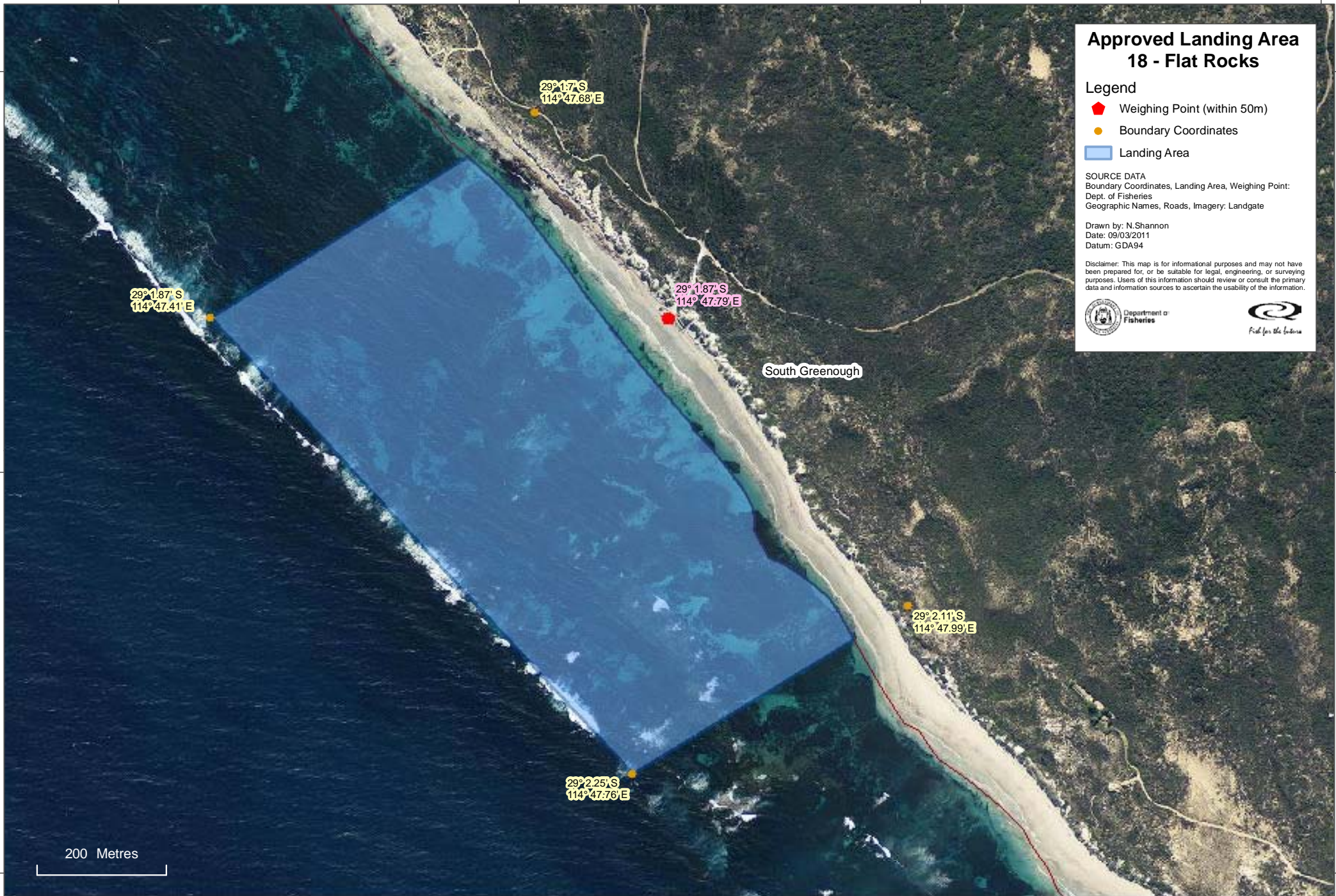


114°47'20"E 114°47'40"E 114°48'0"E 114°48'20"E

29°1'40"S

29°1'40"S



### Approved Landing Area 18 - Flat Rocks


**Legend**

- Weighing Point (within 50m)
- Boundary Coordinates
- Landing Area


**SOURCE DATA**  
 Boundary Coordinates, Landing Area, Weighing Point:  
 Dept. of Fisheries  
 Geographic Names, Roads, Imagery: Landgate

Drawn by: N.Shannon  
 Date: 09/03/2011  
 Datum: GDA94

Disclaimer: This map is for informational purposes and may not have been prepared for, or be suitable for legal, engineering, or surveying purposes. Users of this information should review or consult the primary data and information sources to ascertain the usability of the information.



Department of  
Fisheries



29° 1' 87" S  
114° 47' 41" E

29° 1' 7" S  
114° 47' 68" E

29° 1' 87" S  
114° 47' 79" E

South Greenough

29° 2' 11" S  
114° 47' 99" E

29° 2' 25" S  
114° 47' 76" E

200 Metres

114°47'20"E 114°47'40"E 114°48'0"E 114°48'20"E

29°2'20"S

29°2'20"S