

Department of Fisheries

Kimberley Aquaculture Zone Project

Why are we setting up an aquaculture zone?

Identifying and establishing Aquaculture Zones for marine finfish will provide an “investment ready” platform for organisations, including indigenous groups, proposing to set up an aquaculture operation. Establishing new aquaculture operations, or expanding existing ones, will provide significant economic benefits to the local community through job opportunities and regional economic diversification. These benefits will all occur without restricting any other activities – people will still be allowed to access the zone as long as they don’t interfere with the aquaculture operations.

Improved protection for the environmental and cultural values

Aquaculture zones will improve the protection of environmental and cultural values. A zonal approach allows the consideration of cumulative impacts to ensure the special values of the Kimberley coastline are not affected when multiple operations are established in one area. Under a case-by-case approach for granting authorisations, this outcome can often be hard to achieve. Extensive technical studies and complex modelling will underpin the approval of the zone to ensure the values and potential effects are identified, well understood and managed. Aquaculture operations would only cover a portion of the zone at any one time.

Where will the zones be located?

We have funding to establish two Aquaculture Zones for marine finfish – one in the Kimberley and one in the Mid-West region of Western Australia. The Kimberley zone will be the first of the two zones to be established and its general location is being determined. We will finalise a decision on the precise boundary after stakeholders have had an opportunity for input. The primary option being considered is to locate the zone in Cone Bay (Figure 1). This location would allow an existing aquaculture operation in Cone Bay to be included in the zone.

When is this happening?

We have already started talking with stakeholders about the project to define the zone and its environmental values. We aim to have the zone in place during 2013.

What can you do?

We welcome any feedback or comments you might have on the project, in particular any comments you may have on the location of the zone or things we should consider. If you would like to provide input or to get more information please contact:

Kerrie Youngs
Department of Fisheries Aquaculture Section
kerrie.youngs@fish.wa.gov.au
Phone (08) 9482 7208.

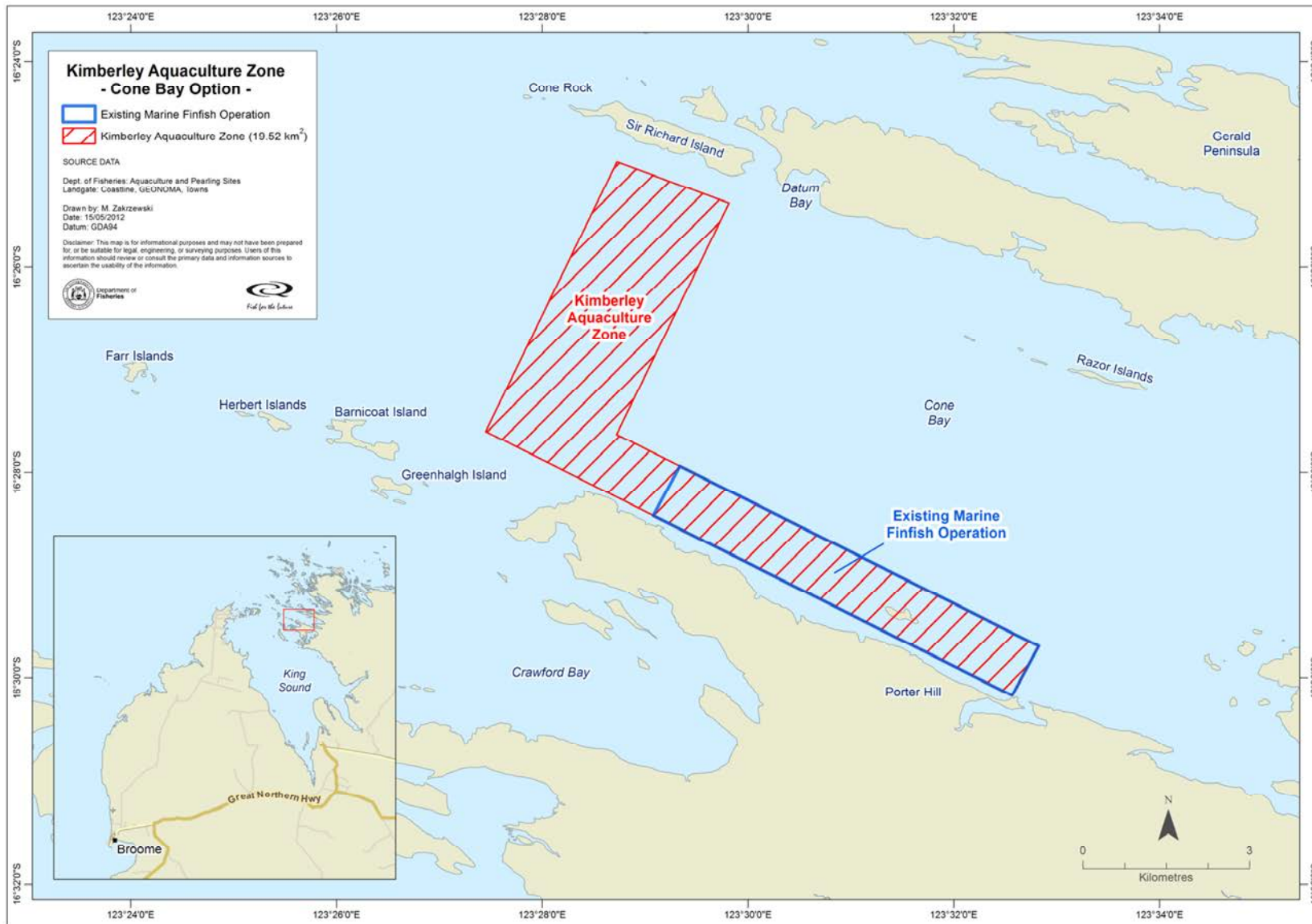


Figure 1: Draft boundary of Kimberley aquaculture zone primary option