

# Resource Sharing Challenges in the WTBF

## A Practitioners View of the Resource Sharing Process

- Ewan Colquhoun, Director, Ridge Partners  
[ewan@ridgepartners.com.au](mailto:ewan@ridgepartners.com.au)
- Geoff Diver, Tuna West: Indian Ocean Tuna Association,  
[geoff.diver@bigpond.com](mailto:geoff.diver@bigpond.com)

# 3 Parts to this Presentation

1. **What was available to work with**
2. **Moving Forward – the facilitated process**
3. **Requirements for Effective Resource Sharing**

# 1. Working with PEOPLE

**It's about people, history, their expectations, etc**

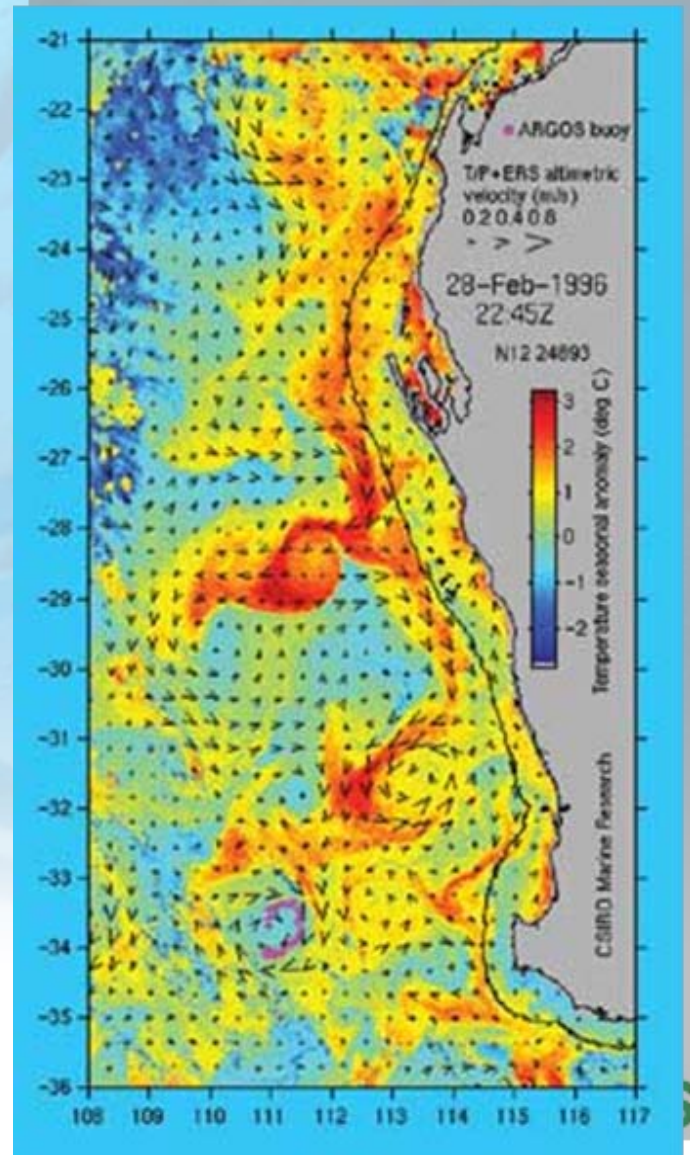
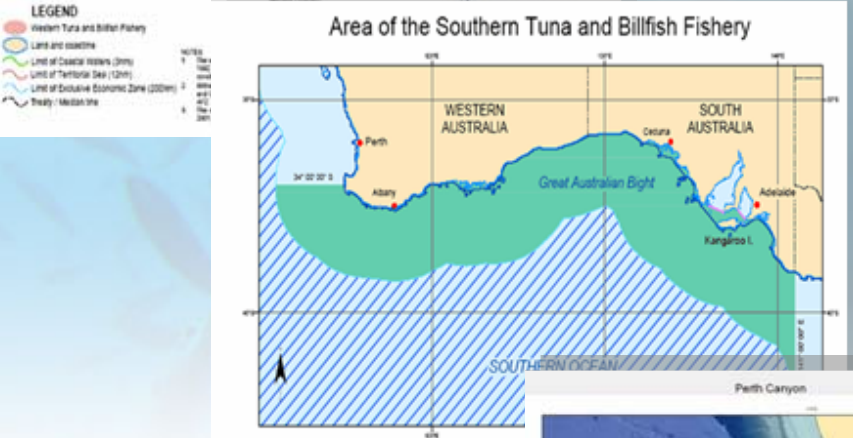
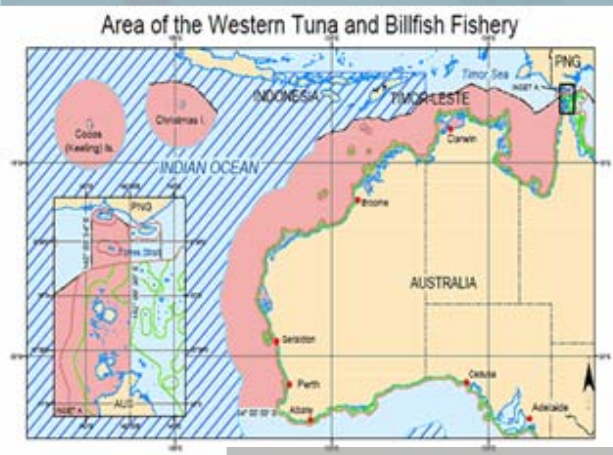
.....with significant financial investments, and passion about what they do

How to get traction on process: trust depends on

- transparency of process,
- empathy with credible arguments,
- honesty regarding expectations, and
- fair dealing with facts.

But.....stalemate had been reached

# 2. GEOGRAPHY, OCEANOGRAPHY, BATHYMETRY



# 3. SPECIES, METHODS, SEASONALITY

## Key species of common interest

- pelagic tuna and tuna like species
- key overlap - striped marlin, yellowfin tuna
- lesser overlap - bigeye tuna, broadbill swordfish
- blue and black marlin - recreational only

## Methods - **longline** and purse seine, plus minor line

## Seasonality

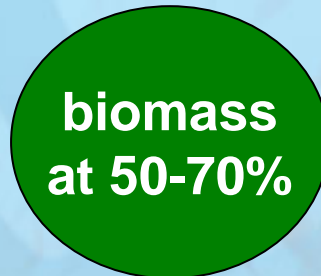
- commercial year round, focus on YFT and STM in summer
- recreational highly seasonal: peaks in the south in summer, and the north in winter.

# 4. FISHERY MANAGEMENT THEORY

## Recreationals

strike rates of trophy sized fish are greatest.

want biomass at 70-80%



## Commercials

harvest the fishery to maintain maximum sustainable yield

want biomass at 40-60%.



want biomass above 50%

Fishery Managers

interaction of highly pelagic species with this theory makes predictable biomass and strike outcomes less certain

# 5. ORGANISATIONS

## Recreationals

**658,000 State fishers**  
Recfish Australia  
Aust Nat'l Sportfish Ass'n  
Aust Fish. Clubs Ass'n

**1,000 game fishers**  
with capacity to access edge of shelf

**17 gamefish clubs**  
Bussleton to Broome  
2000kms

Indigenous fisher effort in WTBF is insignificant

**WA  
Game  
Fishing  
Ass'n**

**Tuna  
West**

## Commercials

**Indian Ocean Tuna Ass'n**

**Australian Fishing Zone**

**124 longline permits in WTBF**

**active longliners**

1997 - 5

2001 - 46

2003 - 27

2005 - 2

- high global oil prices
- global market prices for tuna
- lack of crews - mining

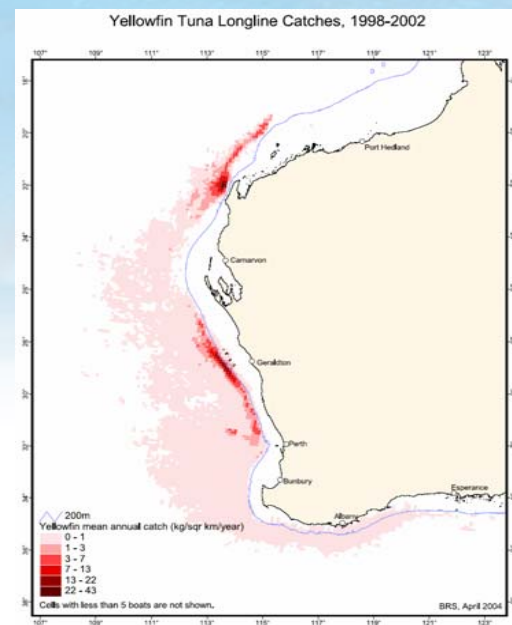
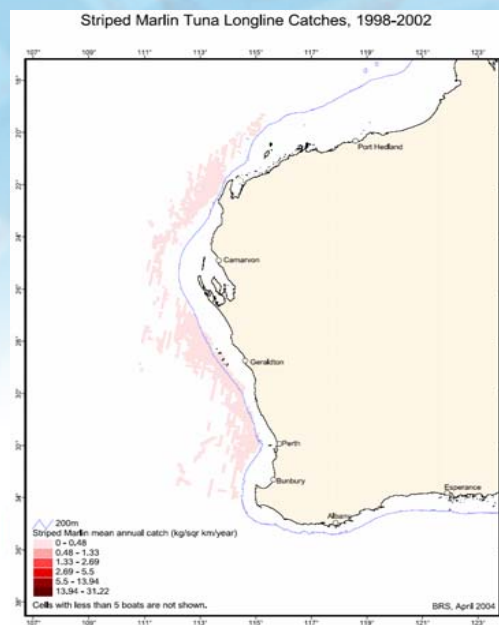
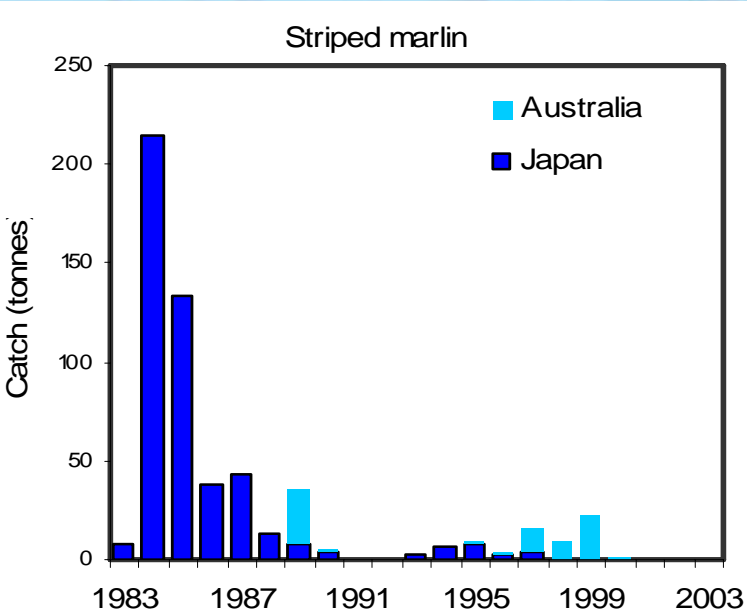
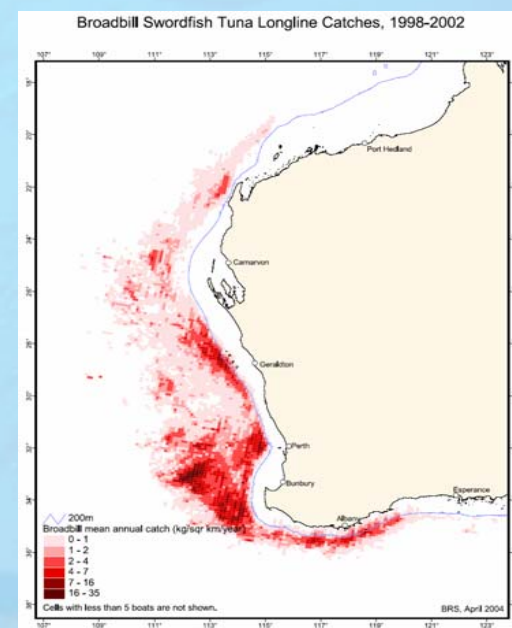
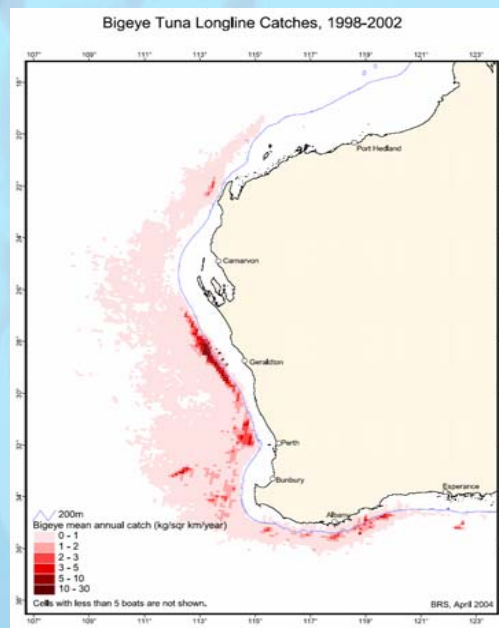
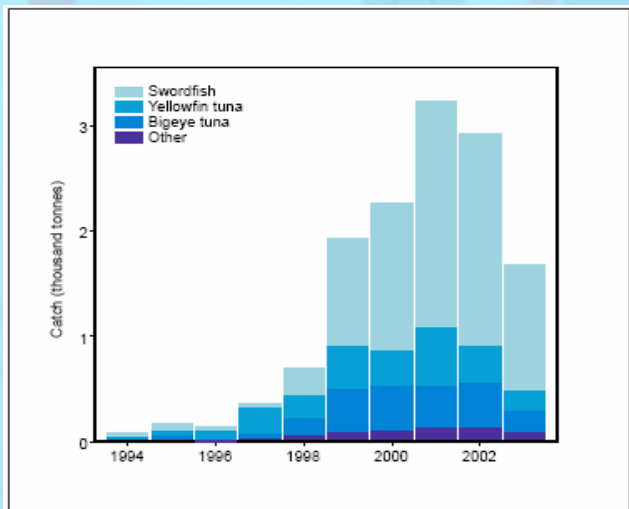
# 6. HISTORY - Fact and Expectation

- 1949 - WA Game Fishing Association formed
- 1952 - 1997 Foreign vessels
- 1979 Australian Fishing Zone – 200nm
- 1998 Declaration of Black and Blue Marlin
- 2002 Coolangatta resource sharing principles
- Important re interpretation of access rights
  - Did either party have a pre-existing right to fish based on historical usage?
  - Is this allocation of rights or reallocation of rights?
  - Is there a trigger for compensation to any party?

# 7. DATA - Fact and Assumption

- Good data is critical to negotiation process
  - Environmental, ----- and Social + Economic
  - limit adverse impacts by setting initial 5 year initial agreement
- Commercial data – good, but bit patchy
  - IOTC / AFZ – degree of stock mixing not clear
  - AFMA comprehensive since 1984
  - GVP \$34 - \$8 million (2004);
  - limited economic/ subeconomy impact analysis
- Recreational data– poor and patchy
  - growth – urban centres and marine park pressures
  - demonstrable recreational fishing hot spots
  - club and seasonality data available, but not comprehensive
  - limited economic / subeconomy impact analysis

# Sample Commercial Data



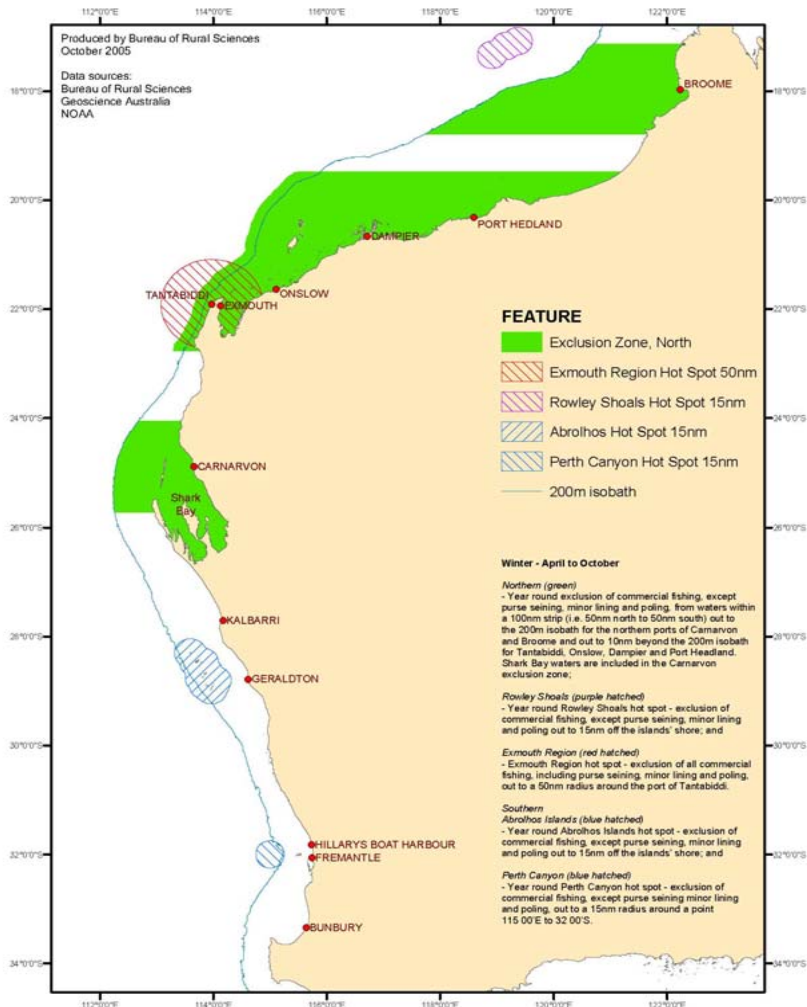
# MOVING FORWARD

## Facilitated Process

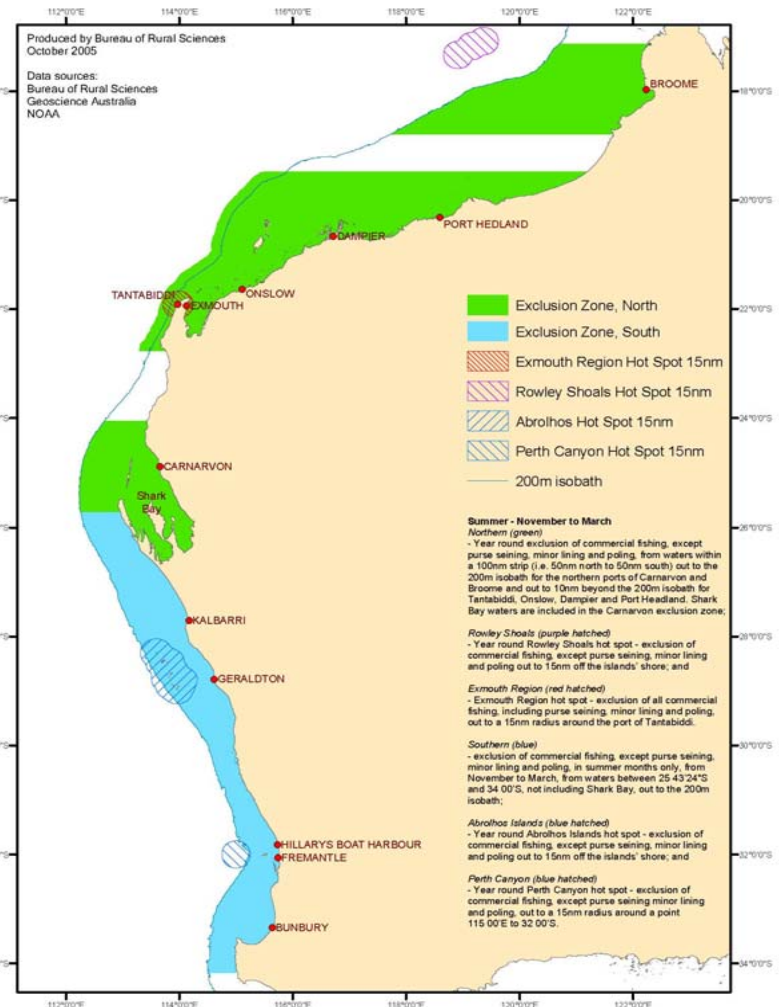
- Goodwill from DAFF guided process stalemate - Records of meetings available
- Consultation with all parties
- Data access, and clarified where possible
- Establish Negotiation Positions
  - Leeuwin Current variable in space, time and intensity
  - agreed 100% of impact within 200m + 25nm on shelf; species ???
  - longline drift – north/south/east/west
  - hotspots for both – Abrolhos Is, Rowley Shoals, Exmouth, Rottnest Trench
  - corridor closure v's port bubbles
- Options for DAF / Minister Decision 13 Oct 2005

# Ministerial Decision

## Option 3c - Winter



## Option 3c - Summer



# REQUIREMENTS FOR EFFECTIVE RESOURCE SHARING

1. Defined policy framework
2. Clarity on any pre-existing rights – all parties
3. Good data re:
  - the marine environment
  - the biomass for target and bycatch species
  - catch and effort - all users, key species, all methods
  - social + economic costs and benefits – direct + indirect
  - resourcing capacity of stakeholders
4. Organisational cohesion and capacity
5. Resourcing of process
6. Timing: fit dynamics of industry, process not drawn out
7. Independent facilitation available to assist
  - to establish and maintain the integrity of and trust in the negotiation process