

# SOUTH WEST ARTIFICIAL REEFS PROJECT

The Department of Fisheries in collaboration with Recfishwest has installed two artificial reefs off Bunbury and Dunsborough as part of a trial project to enhance recreational fishing in Geographe Bay.

The \$2.38 million project is being funded through the Royalties for Regions program and through recreational fishing licence fees as part of the Recreational Fishing Initiatives Fund.

The reefs are aimed at providing new habitats for species such as pink snapper, skippy (silver trevally) and Samson fish.

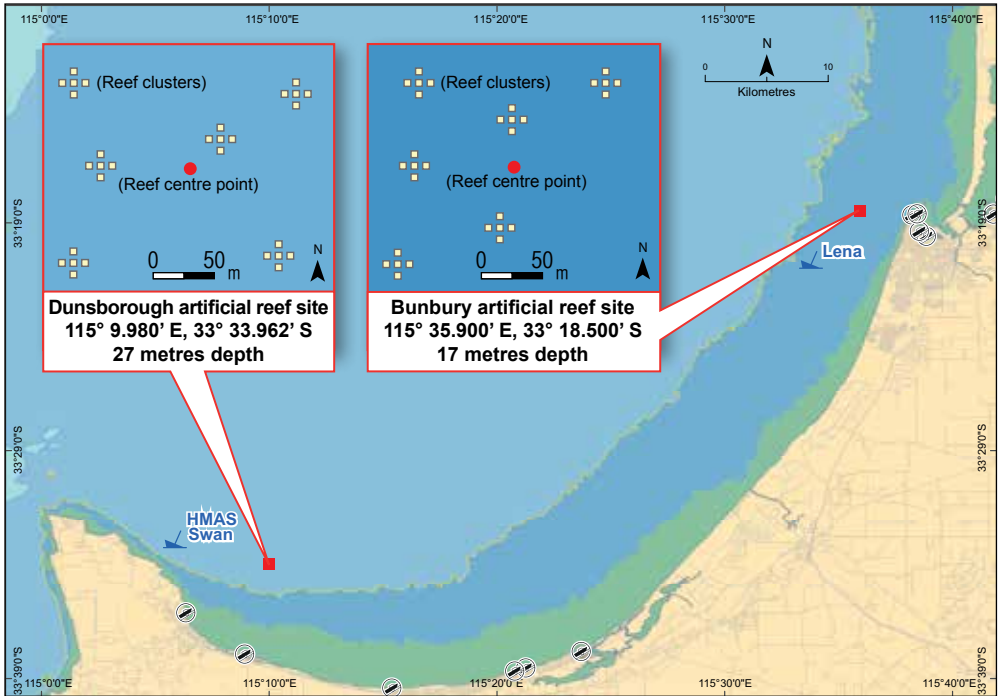
International experience has shown artificial reef structures provide clear environmental benefits and, in some cases, can support a greater number of fish and a wider range of species than adjacent natural reefs.

The project funding will also support a comprehensive monitoring and assessment program.



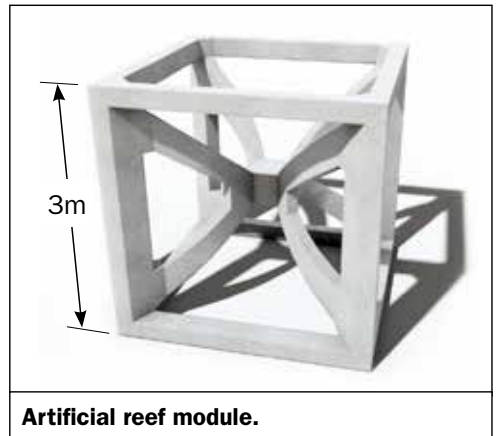
## Where are the artificial reefs located?

Local experts and Recfishwest helped identify the two locations for the reefs.



Each artificial reef is made of 30 ten-tonne reinforced concrete modules placed in six clusters in the four hectares reef area.

As well as enhancing recreational fishing opportunities for local fishers and tourists to the area, the initiative will benefit businesses connected to recreational angling, boating and accommodation.



## More information

Visit [www.fish.wa.gov.au/artificialreefs](http://www.fish.wa.gov.au/artificialreefs)