

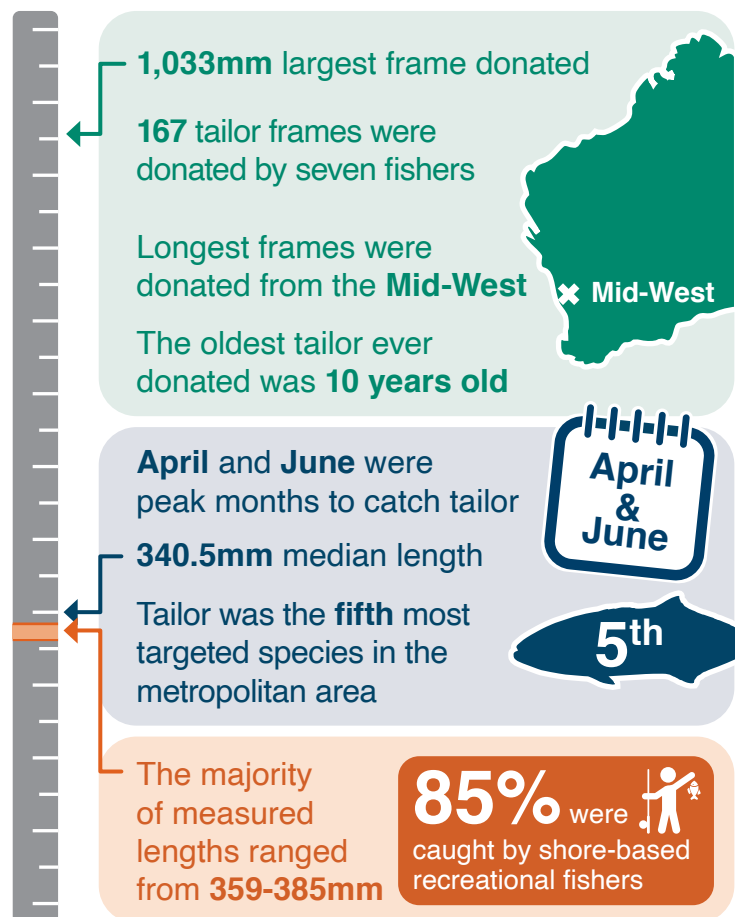
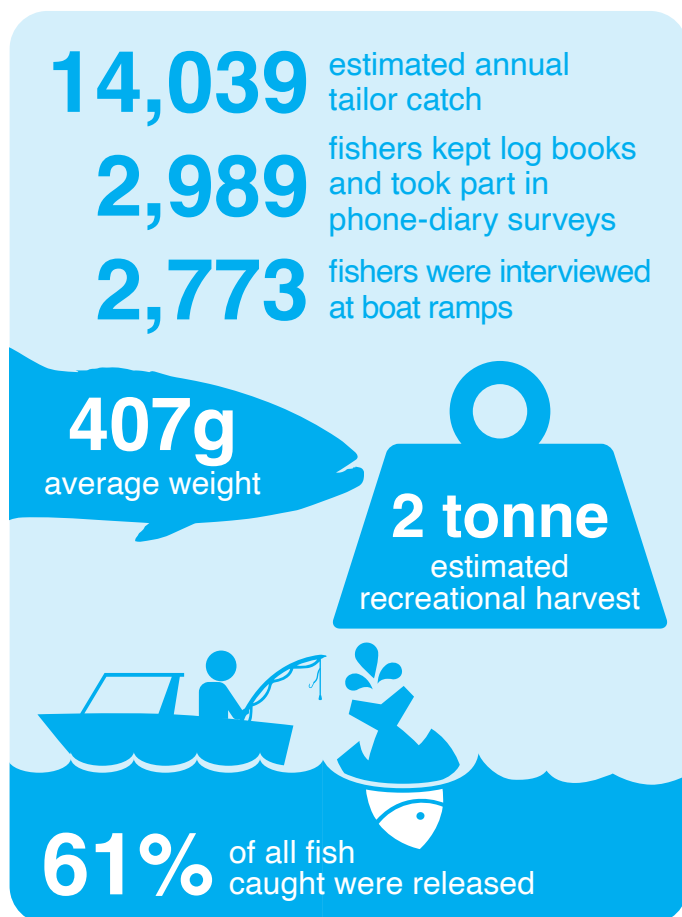
Catch the stats on tailor

Tailor (*Pomatomus saltatrix*)



We collect information from recreational fishers year-round to help inform fisheries management to ensure that you can continue catching fish and that resources remain sustainable.

Here are some results of recent tailor research you helped generate!



Source of data (colour coded):

Statewide Recreational Fishing Survey

Boat-based recfishers reported catch and effort data over 12-months in 2017/18.

Send Us Your Skeletons

Recfishers donated fish frames, allowing us to record age, length and sex since 2000.

Shore-Based Metro Survey

Shore-based fishers were interviewed while fishing to collect catch and effort data from February to June in 2021.

Research Angler Program

Fishers in this program keep a logbook of their fishing activity.