



Department of
Primary Industries and
Regional Development

Don't dump that fish!



Help keep
aquarium fish
where they
belong

Pets can become pests

Protect the environment – don't release aquarium fish into Western Australia's sensitive waterways.

Aquarium fish that are not native are often more aggressive than native species and can outcompete them, consuming their food and taking up their space. They can also spread disease, kill local species and damage natural habitats.

Aquarium snails can also cause damage and aquarium plants can choke waterways.

Please be responsible. **Never dump fish or aquarium contents in or near waterways, ponds, lakes, drains or the ocean.**

No longer want your fish?

If your fish are healthy but you no longer want them, give them to a pet shop, other fish owners or an organisation with an aquarium. You could also advertise them on a local notice board or on social media.

A school, office or nursing home may be willing to take them. If they don't have an aquarium, consider donating yours.

If you can't find a new home for your fish, or **if they are sick or diseased**, dispose of them humanely. Visit www.rspca.org.au for more information.

Tip **aquarium water** onto grass, away from drains and waterways.

Put **gravel, live rock and aquatic plants** in the bin or bury them in your garden.

Species that are not native to WA are already threatening our local species – we don't want to add more.

Examples of problem species

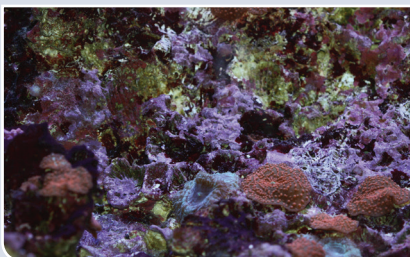
Apple or mystery snail (*Pomacea bridgesii*)

Spreads rapidly in running water, such as drainage channels. Grows to 5 cm wide and 6.5 cm high. Photo: Lars Simonsen.



Aquarium water, gravel and 'live rock' (pieces of coral reef)

Contain organisms that could become pests.



Cabomba weed (*Cabomba caroliniana*)

Chokes native plants, birds, fish and reptiles. Stems grow to 5 m (sometimes 10 m) long.



Carp and goldfish (Cyprinidae family)

Outcompetes and spreads fish disease to native fish. Grows to 10–30 cm.



Tilapia (*Oreochromis mossambicus*)

Competes with native species for food and space. Stirs up mud, ruining waterways for other species. Grows to 39 cm.



Help protect our waterways

- Don't import, keep, breed or release noxious species. Penalties of \$10,000 or more apply.
- Visit www.fish.wa.gov.au/biosecurity for information on noxious fish and to learn more about translocation requirements (moving live fish).
- Don't buy fish, plants or live rock from overseas on the internet. Use a reputable local dealer.
- Don't design fish tanks and ornamental ponds so that contents can overflow and enter our waterways.
- If you see anything unusual in our waterways, call FishWatch on **1800 815 507** (24 hour reporting).

Contact us

1300 374 731 (1300 DPIRD1)
aquatic.biosecurity@dpird.wa.gov.au
www.fish.wa.gov.au/biosecurity



dpird.wa.gov.au